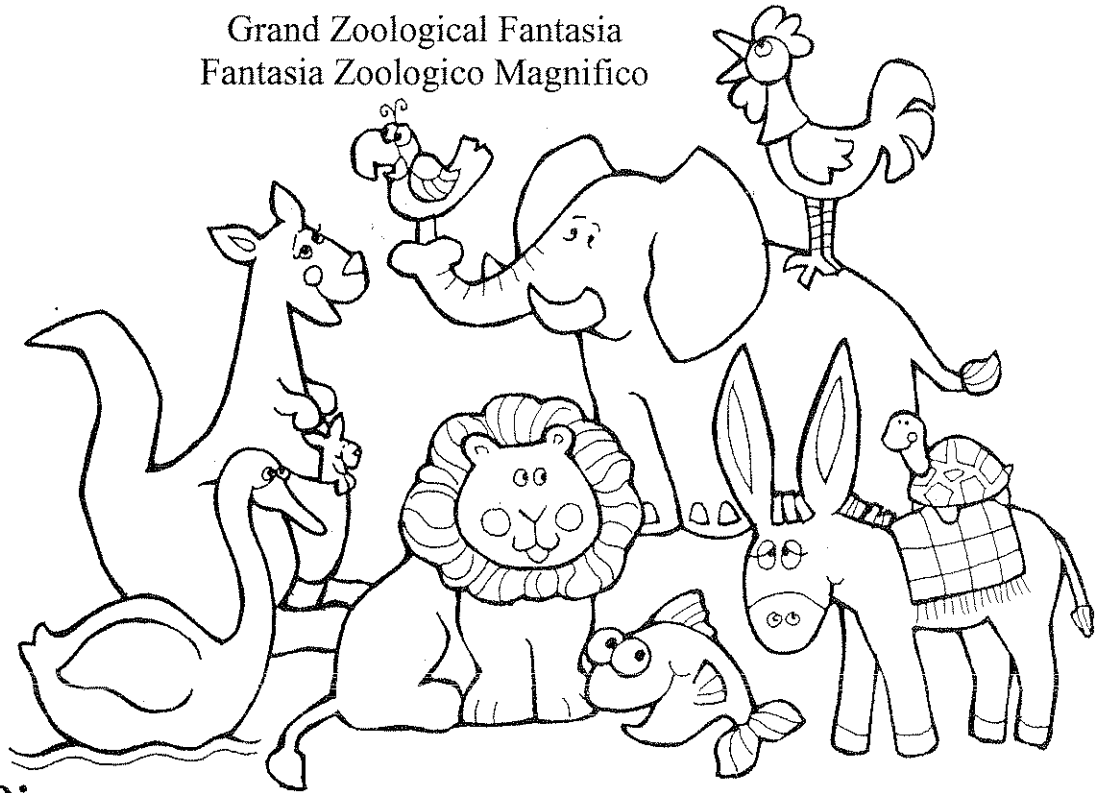


# Carnival of the Animals

## Carnaval de los Animales

By Camille Saint-Saens

Grand Zoological Fantasia  
Fantasia Zoológico Magnífico



Name: \_\_\_\_\_

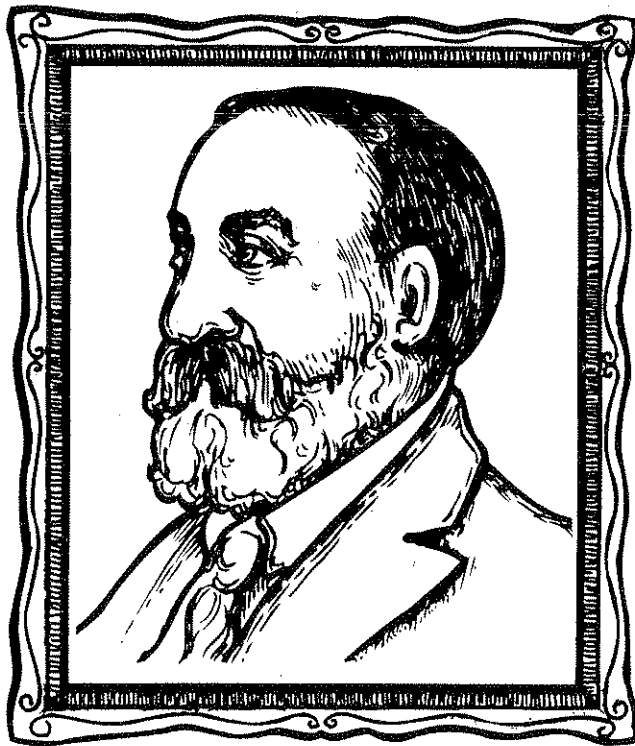
1. Introduction/Introducción
2. Royal March of the Lion/Marcha real del león
3. Hens and Roosters/Gallinas y Gallos
4. Wild Horses/Caballos Salvajes
5. Tortoises/Tortugas
6. The Elephant/El Elefante
7. Kangaroos/Canguros
8. Aquarium/Acuario
9. Personages with Long Ears (Donkeys)/Personajes con oídos largos (Burros)
10. The Cuckoo in the Depth of the Forest/El Cuco en el fondo del Bosque
11. Aviary/Aviary
12. Pianists/Pianistas
13. Fossils/Fósiles
14. The Swan/El Cisne
15. Finale/Finale

# *The Carnival of the Animals*

by Camille Saint-Saëns

The *Carnival of the Animals* is a suite for two pianos and orchestra. It includes a narration by Ogden Nash. Each animal is presented with characteristic instrumentation and predictable musical style. Saint-Saëns wrote this work for his own entertainment, and except for the "Swan" section, did not allow it to be published or performed during his lifetime. It is his personal salute to feathers, fur, and fins.

The first animal is the lion. We hear his majestic march and loud roar. Next comes the rooster with characteristic pecking and cackling. Fast piano music introduces the mules followed by the slow tortoises dancing to the "Can-Can" theme of Offenbach. Ask children to guess the animal after hearing the cumbersome double bass solo that describes the elephant. It is contrasted by the light hopping of the kangaroos which follows. In the aquarium, flutes and violins describe a variety of fish. The water is depicted by the piano. There is more music from the mules and a short moment when the clarinet imitates the voice of the cuckoo bird. In the aviary we hear bird calls and are aware of them flying overhead. Saint-Saëns departs for a moment to include some unusual animals, "Pianists," in a practice session of scales and exercises. We visit a museum and hear the fossils dancing, and then enjoy the most famous movement, "Swan," with a lovely theme played by the cello. The animals return for a bow in the finale.



Camille Saint-Saëns was born in Paris, France, into a family of working class people. His father died when he was three months old, and Camille was sent to a baby farm for two years. His mother and great-aunt raised him after that. He was a musical prodigy from the age of two and a half when he was first taught piano by his great-aunt. At three years of age he learned musical notation, and by the age of five he was writing songs and piano pieces.

He was a phenomenal talent and was respected throughout Europe. He entered the Paris Conservatory in 1848 where he studied organ. Anton Rubinstein regarded him as "the greatest organist in the world." He

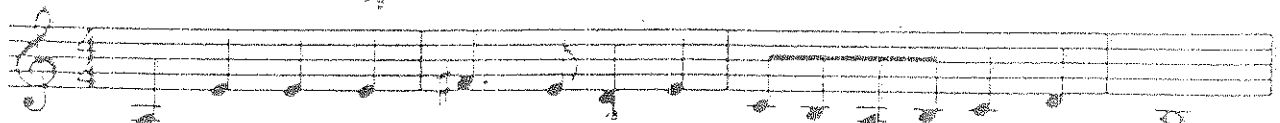
was the organist at Madeleine Church in Paris, a post which he held for twenty years. In this position, Saint-Saëns was able to continue composing. His music won several notable prizes.

As well as his musical scholarship, he had a great sense of humor that won him many friends among musicians of his day. He married in 1875. Unfortunately, his two children died within a short time period. These tragedies caused the end of the marriage. He began a period of concentrated work and produced many of his finest compositions. He traveled extensively, giving concerts around the world. Saint-Saëns died in Algiers where he was spending the winter in 1901.



Loud

Soft



# Hens and Roosters

Circle the elements that fit this song:

High	Fast	Long	Loud
Low	Slow	Short	Soft



Fold

Strings and



# Wild Horses

Circle the elements that fit this song:

High

Fast

Long

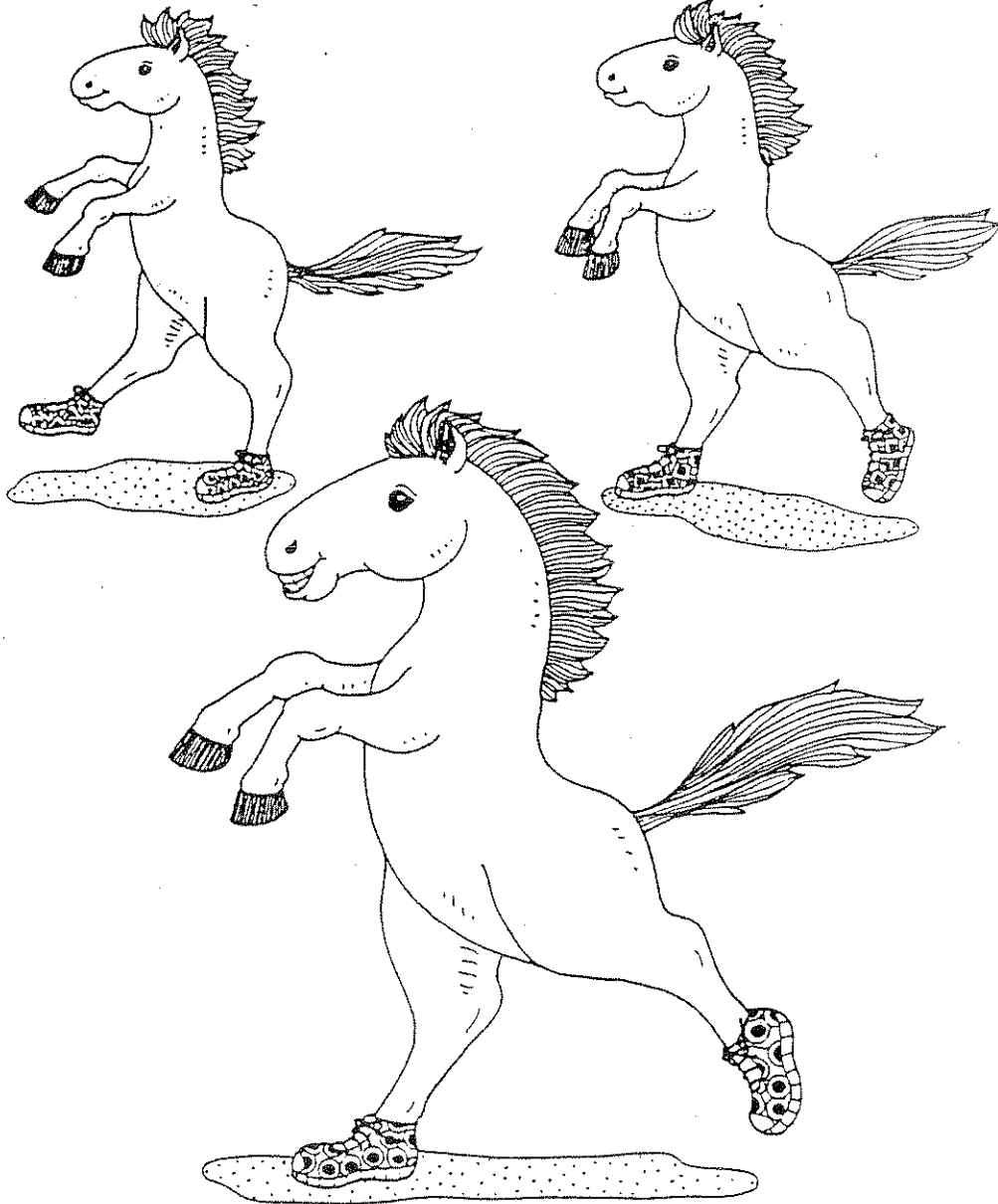
Loud

Low

Slow

Short

Soft



Fold



# Tortoises

Circle the elements that fit this song:

High

Fast

Long

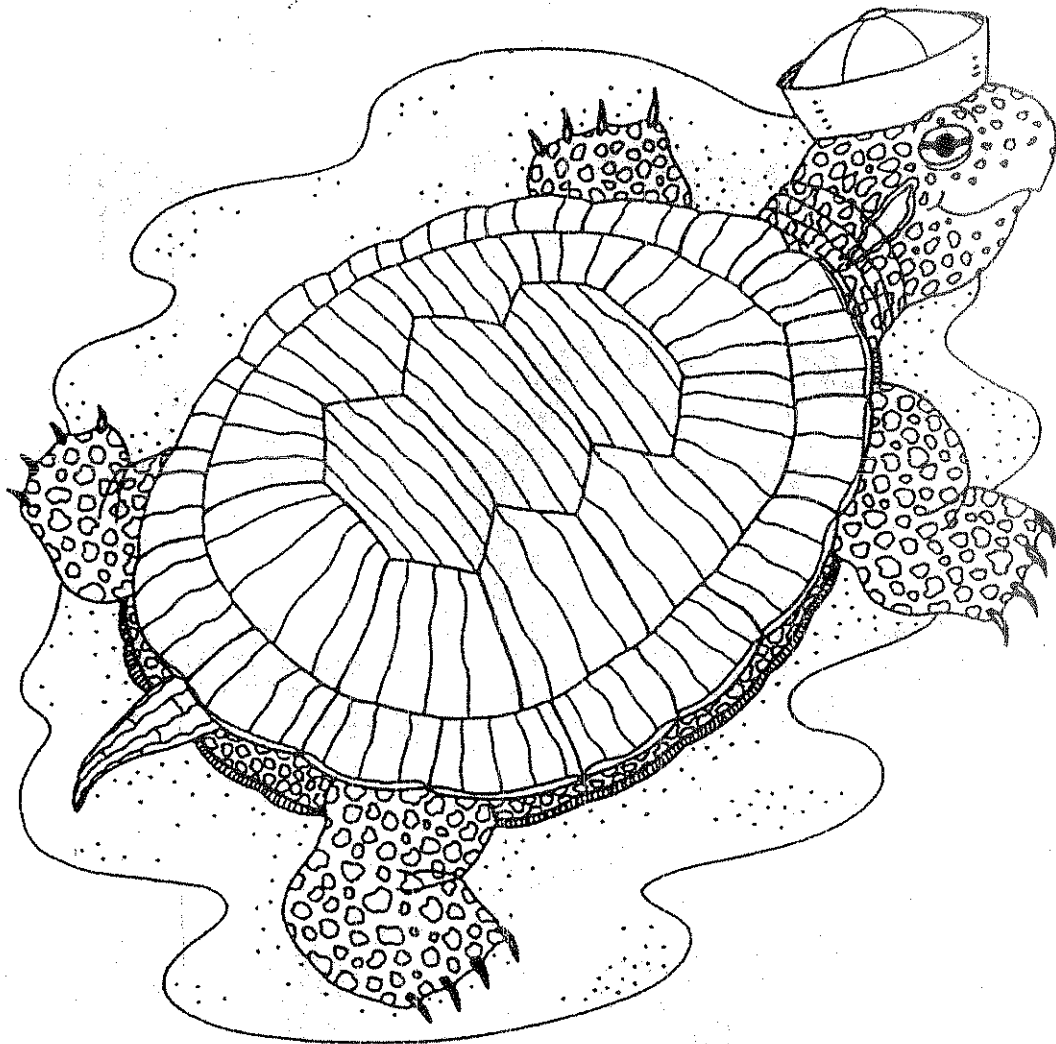
Loud

Low

Slow

Short

Soft



**Fold**

Low



# The Elephant

Circle the elements that fit this song:

High

Fast

Long

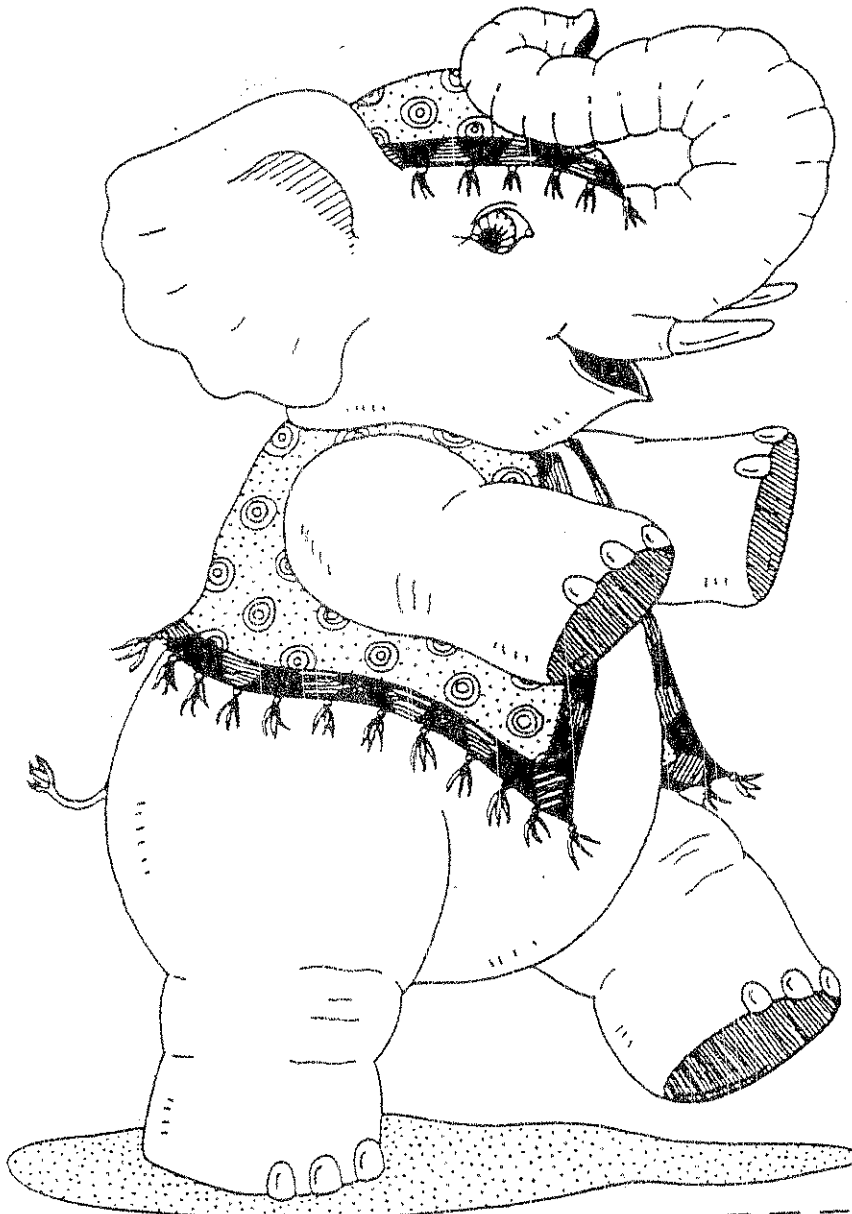
Loud

Low

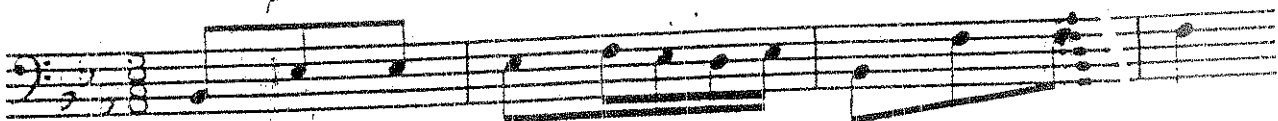
Slow

Short

Soft



## Bass



# Kangaroos

Circle the elements that fit this song:

High

Fast

Long

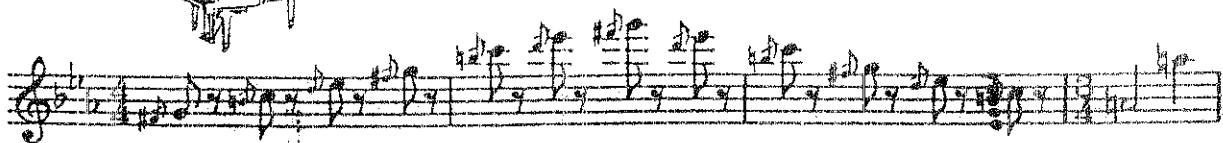
Loud

Low

Slow

Short

Soft





# Aquarium

Circle the elements that fit this song:

High

Fast

Long

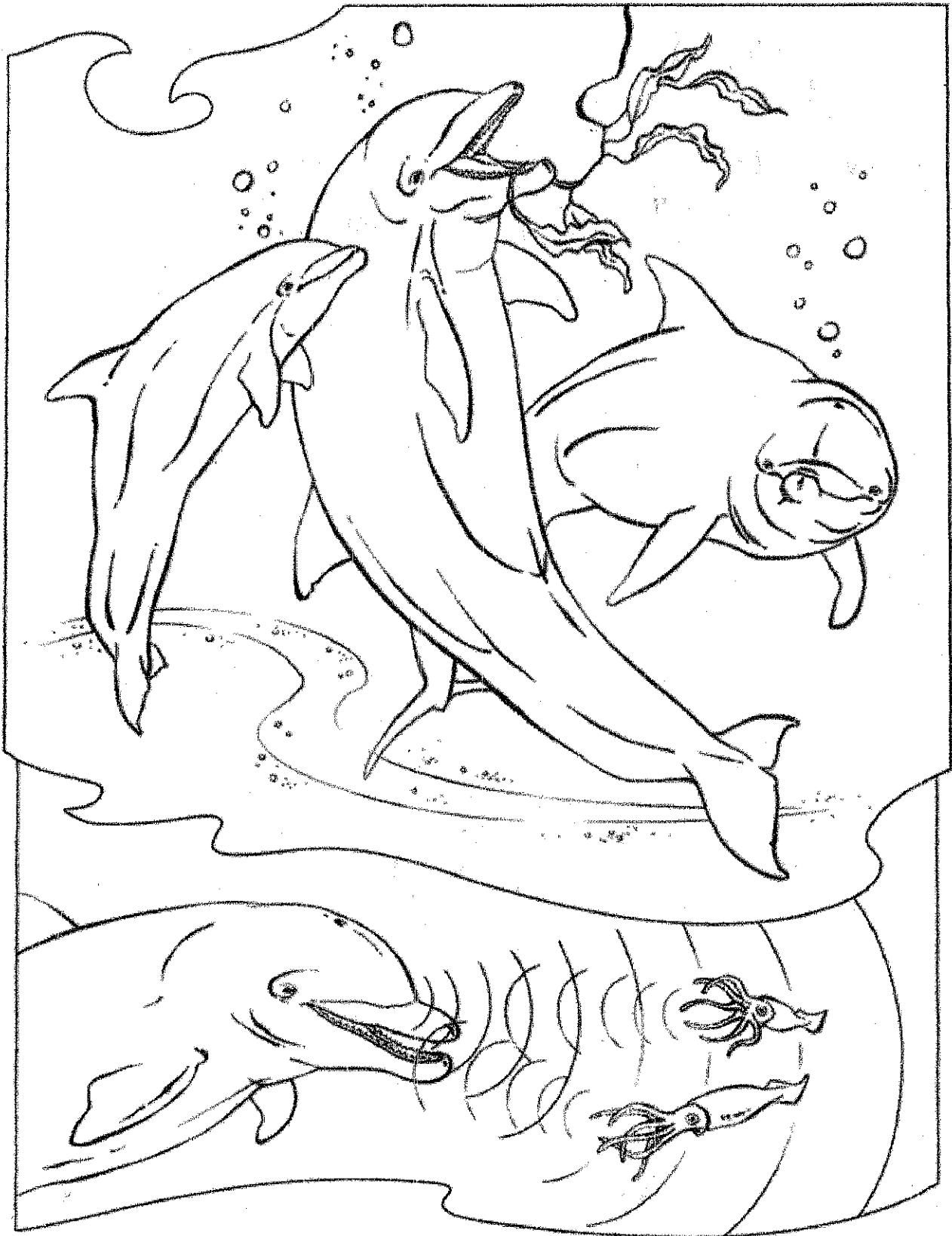
Loud

Low

Slow

Short

Soft



# Personages with Long Ears

Circle the elements that fit this song:

High	Fast	Long	Loud
Low	Slow	Short	Soft



# The Cuckoo in the Depth of the Forest

Circle the elements that fit this song:

High

Fast

Long

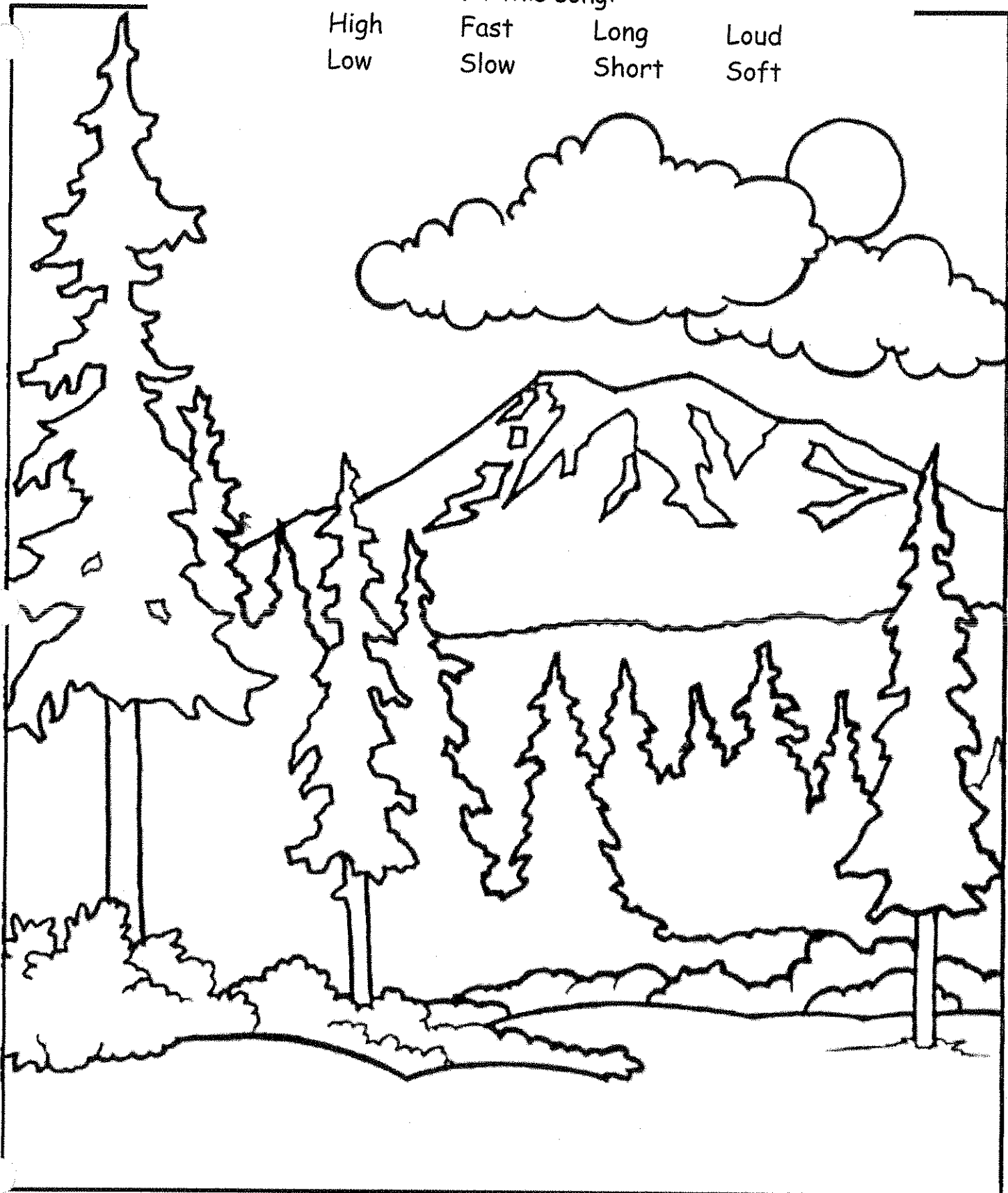
Loud

Low

Slow

Short

Soft



# Aviary

Circle the elements that fit this song:

High

Fast

Long

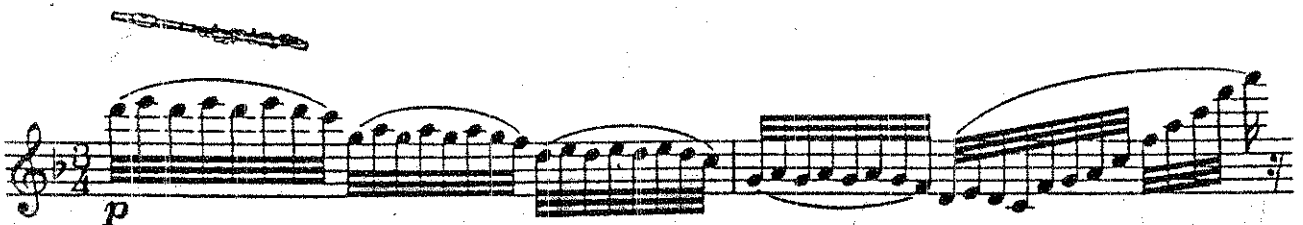
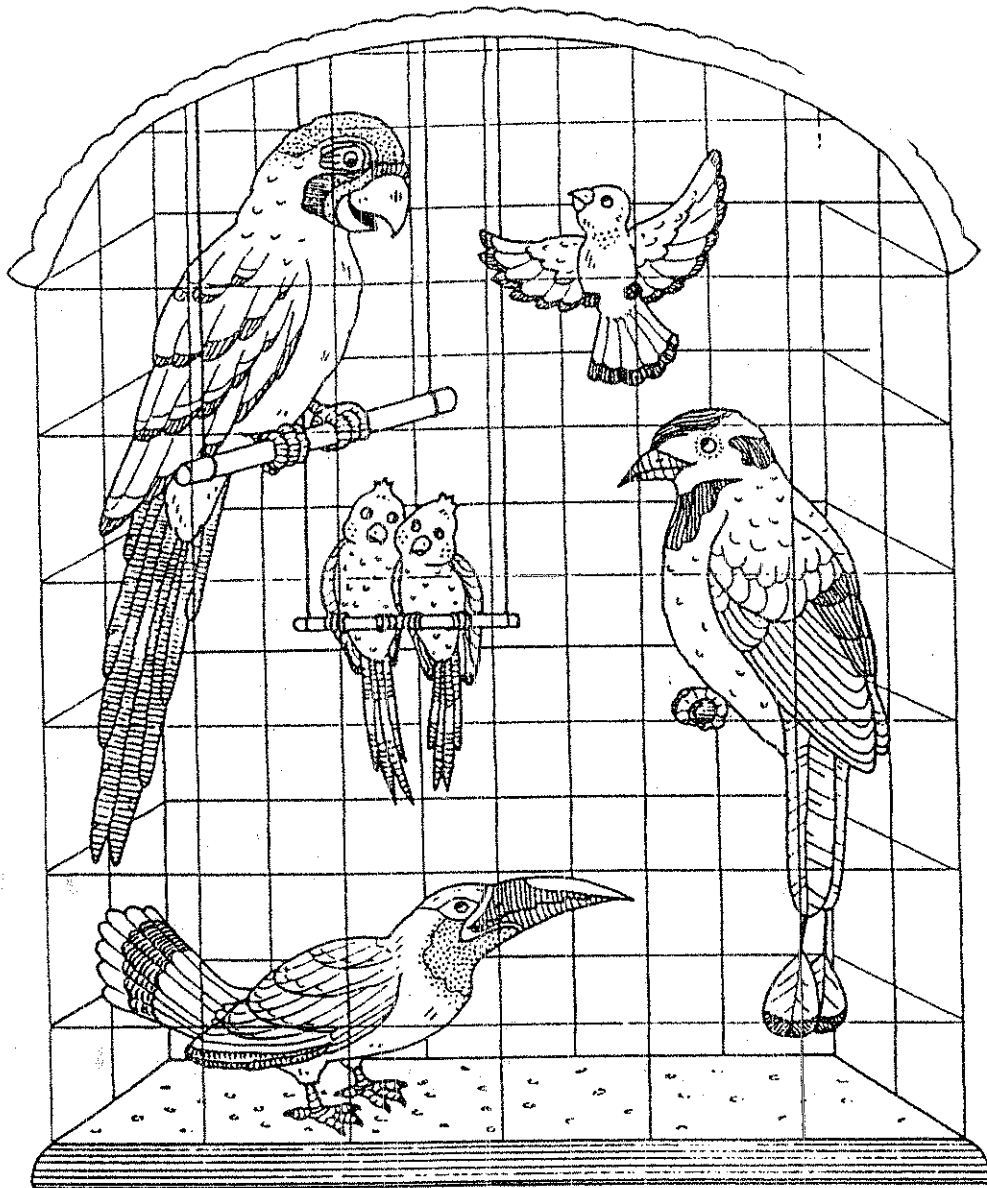
Loud

Low

Slow

Short

Soft



# Pianists

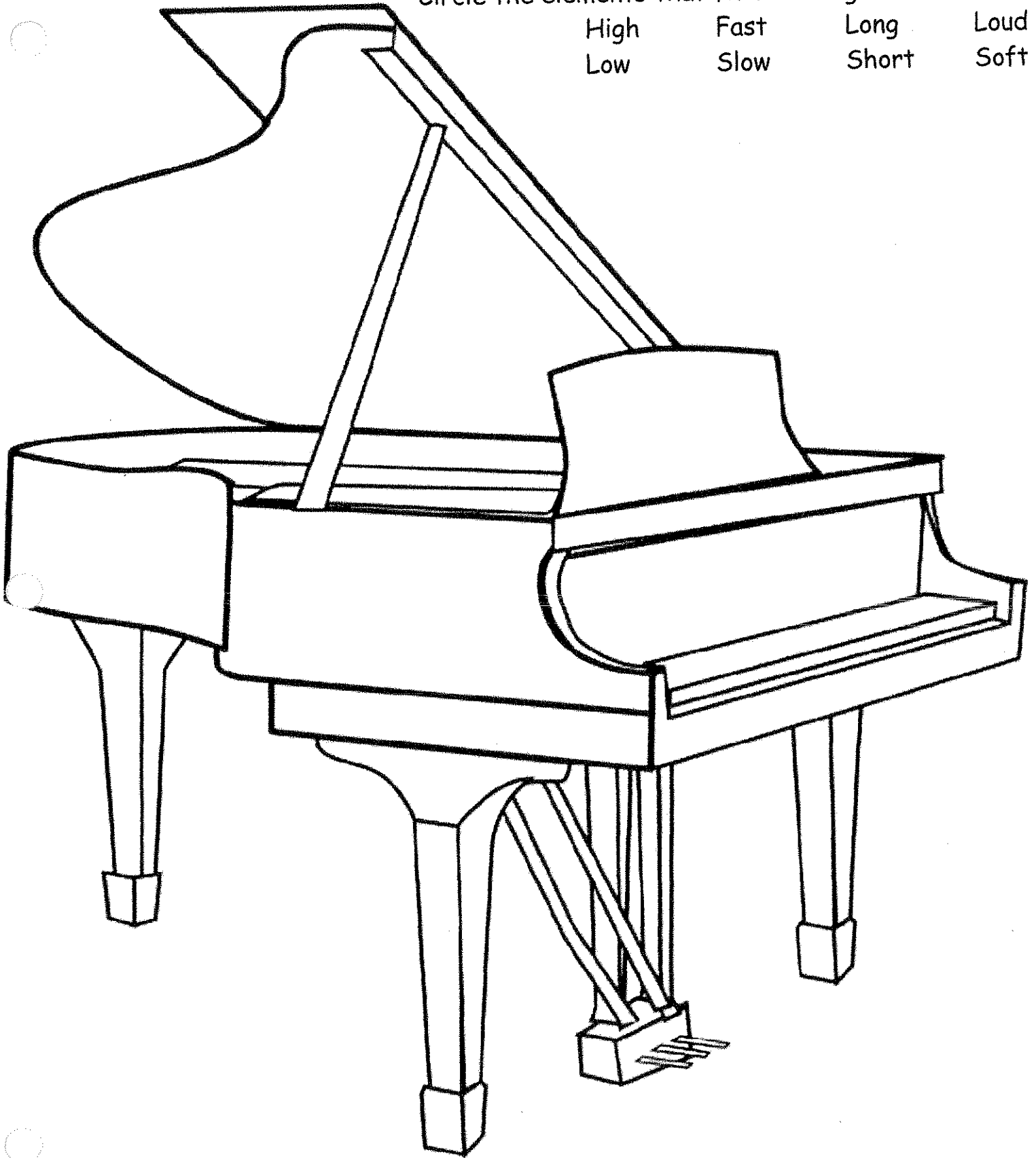
Circle the elements that fit this song:

High  
Low

Fast  
Slow

Long  
Short

Loud  
Soft



# Fossils

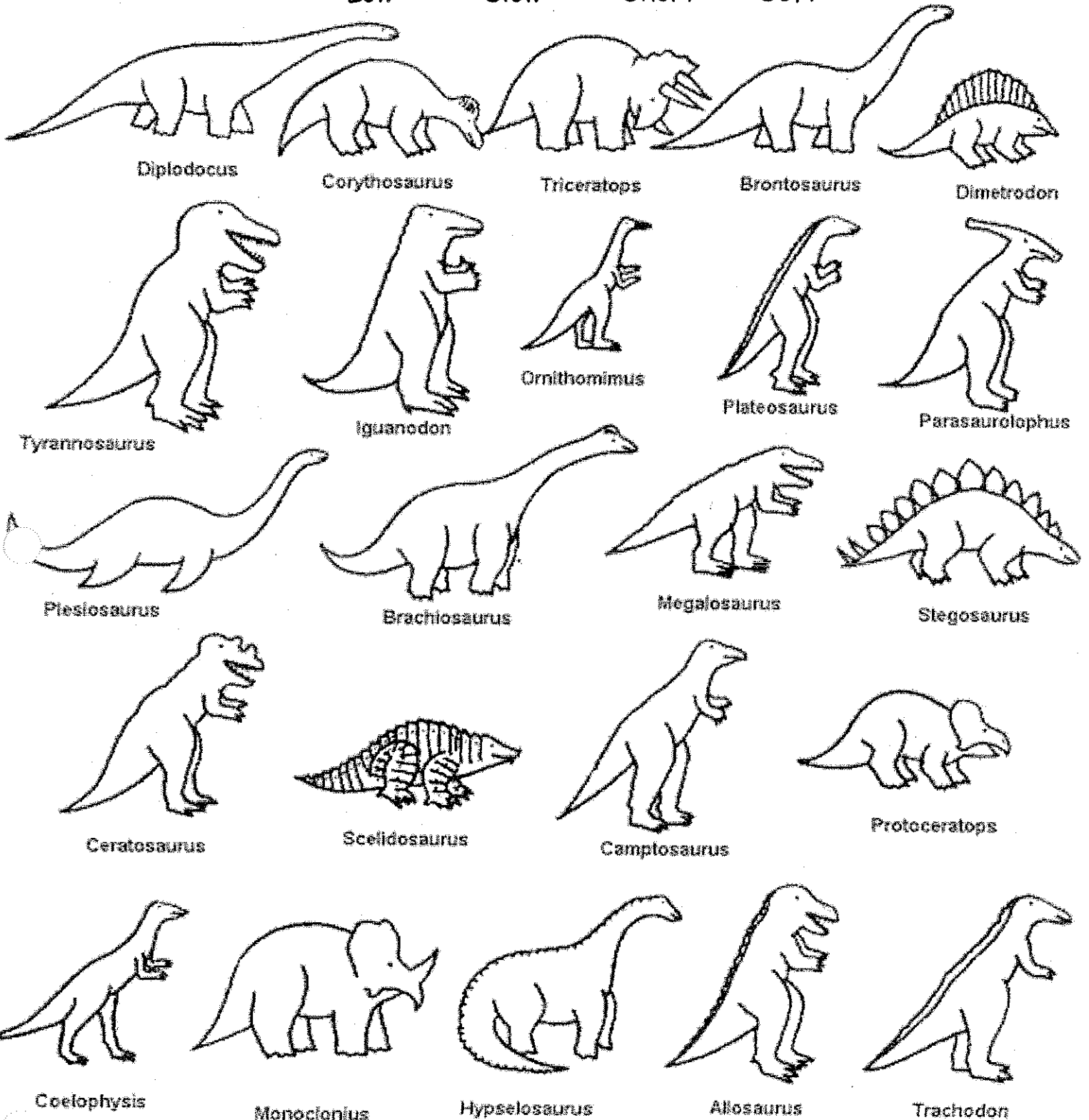
Circle the elements that fit this song:

High  
Low

Fast  
Slow

Long  
Short

Loud  
Soft



# The Swan

Circle the elements that fit this song:

High

Fast

Long

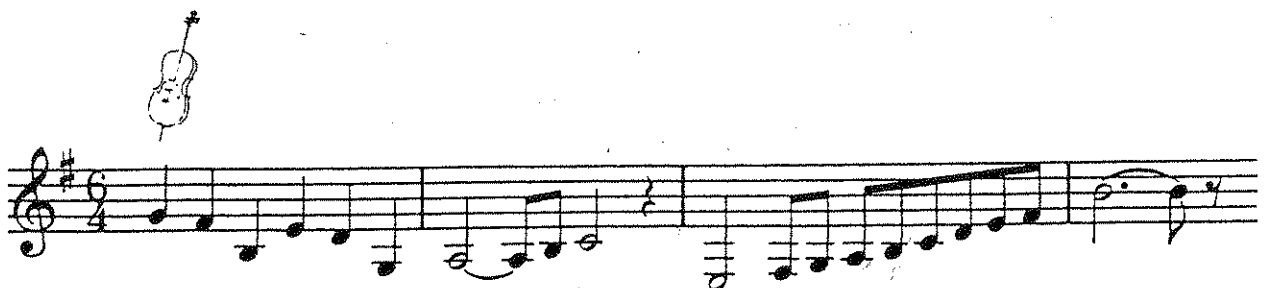
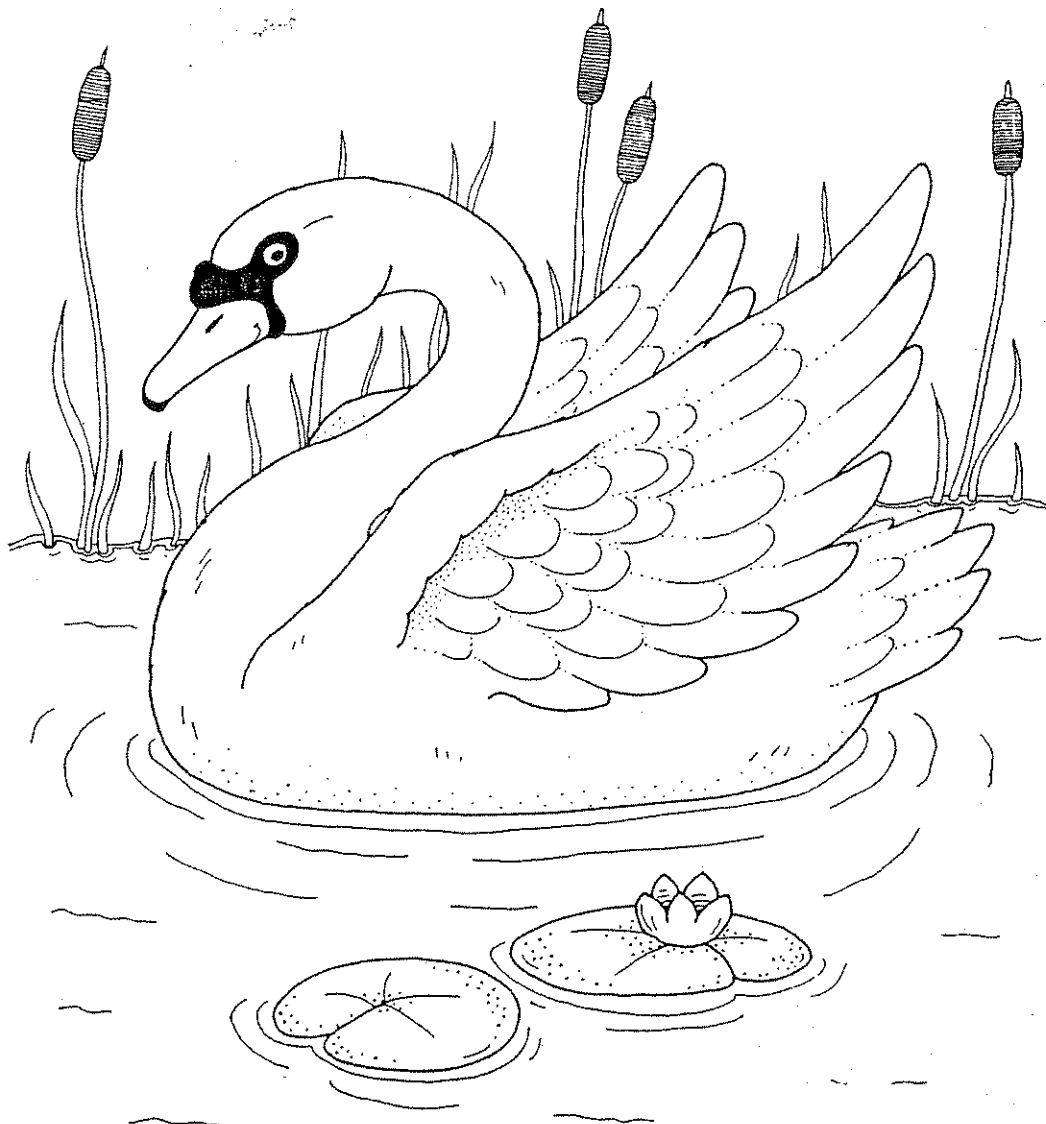
Loud

Low

Slow

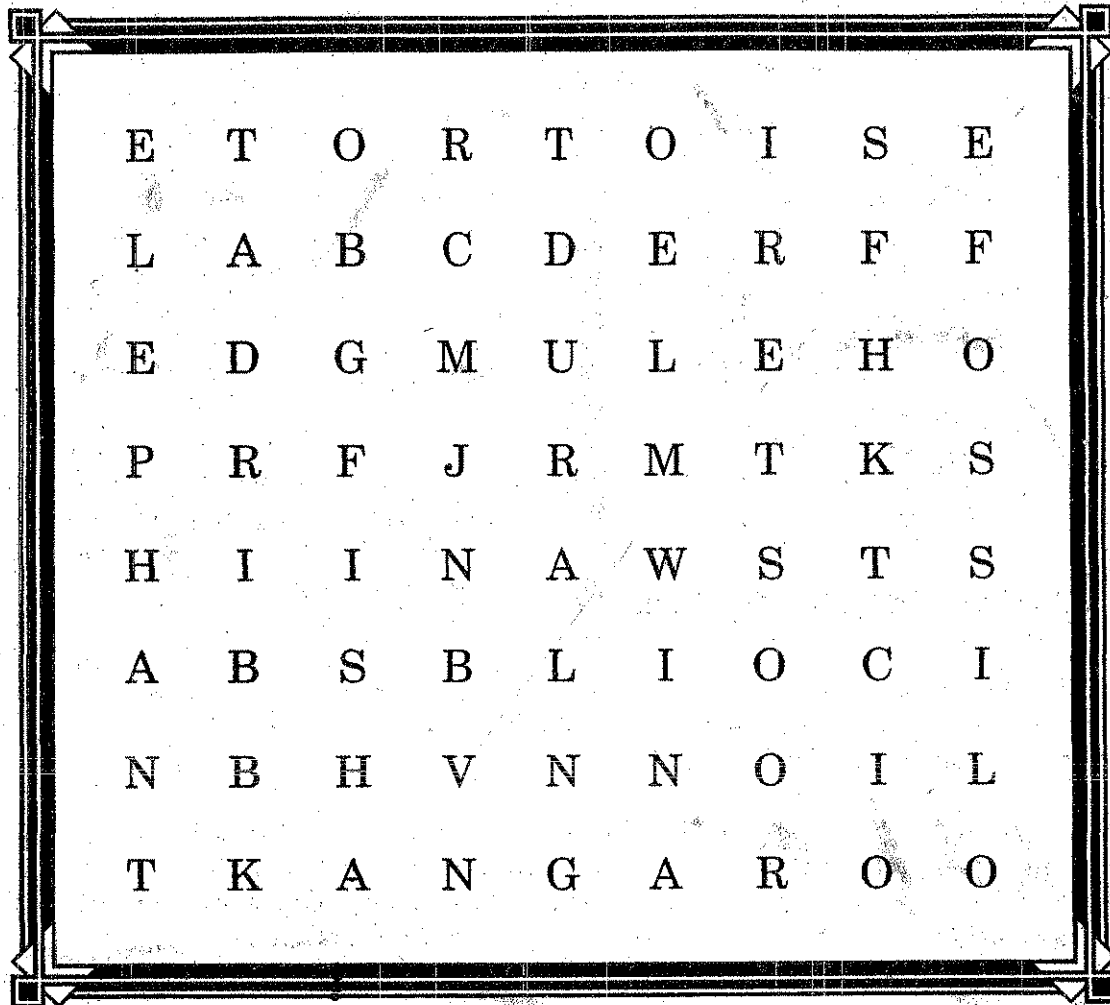
Short

Soft



## The Carnival of the Animals

Circle the animal names in the puzzle.



LION  
TORTOISE  
FOSSIL

ROOSTER  
ELEPHANT  
SWAN

BIRD  
KANGAROO

FISH  
MULE